



Minidatalogger HD207... / HD227... HD206... / HD226...



TEMPERATURE / RELATIVE HUMIDITY

Minidatlogger

HD207... / HD227... Temperature
HD206... / HD226... Temperature / Relative Humidity

HD206.../HD226... and HD207.../HD227... series data loggers are low-cost, rugged instruments, for a long-term reliable monitoring of temperature and temperature/relative humidity measurements. They are available in different versions: with or without LCD display, with temperature sensor either inside or outside the instrument housing, or with cable connection. The analysis of acquired data is made using Delta Log2 software for Windows. The datalogger functions of Start, Stop, Configuration, Data Download and Setting of storage interval are selectable either from keyboard or from a computer. Through a computer, you can define a password to enable the access to configuration data.

Typical applications are: monitoring of temperature/humidity during transportation, storage of fresh or frozen foods, fruit, vegetable products and flowers, pharmaceuticals, sensitive and photographic products, paper, explosives, as well as laboratory activities in general.

Configuration and data download to a PC are very easy: DeltaLog2 dedicated software guides the operator step by step.

SIT calibration certificates for on all versions can be issued.

Excellent protection against atmospheric agents.

Temperature and relative humidity high accuracy all over the range.

Resolution: 0.1°C, 0.1% RH.

Sampling freely selectable by the user.

Manual control of acquisition start and stop either through a pushbutton or a clock.

Fast download of stored data.

240.000 data capacity on a single channel and 80.000 data capacity on three simultaneous channels.

Flash memory for holding data storage even when the instrument is without battery or with battery low.

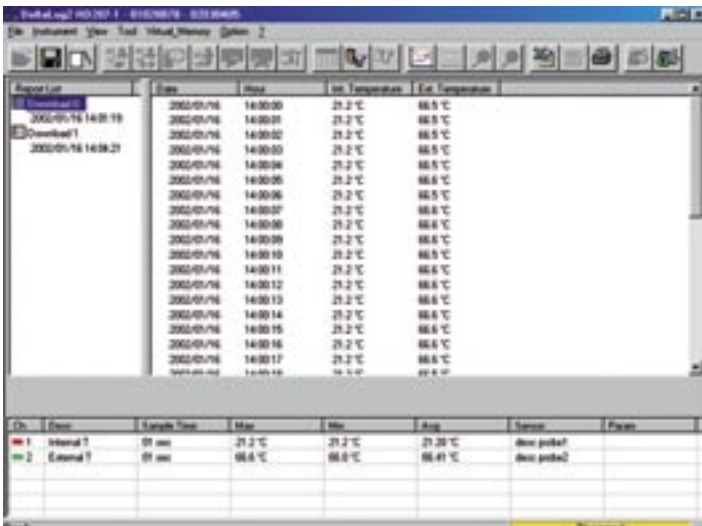
Battery replaceable by the user.

Indication of flat battery.

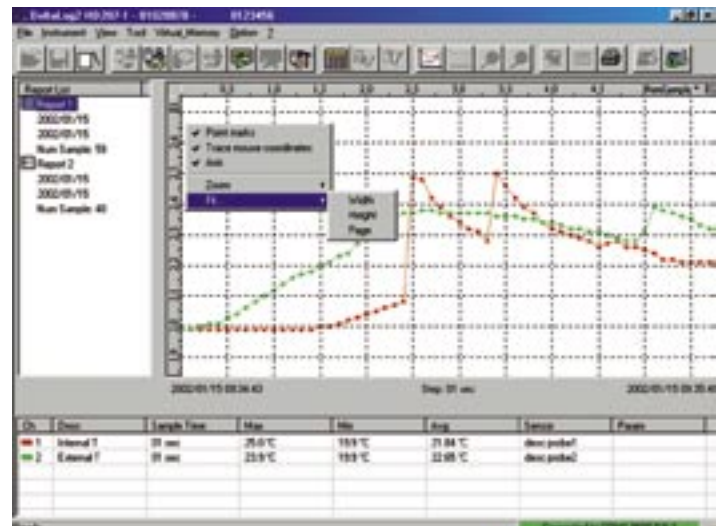
All models provide a visual indication while the instrument is acquiring.

Technical Specifications

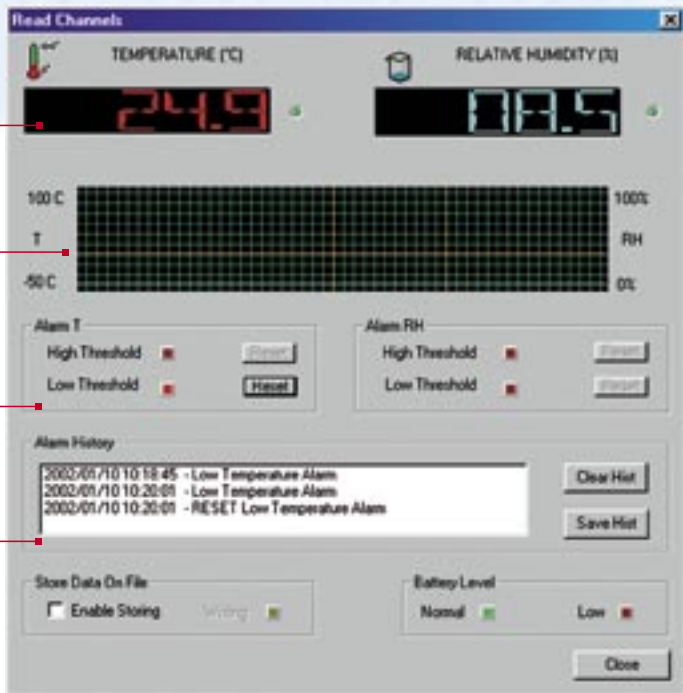
Versions with LCD		HD207	HD207-1	HD206-1	HD206-2
Versions without LCD		HD227	HD227-1	HD226-1	HD226-2
Temperature sensor		NTC 10KΩ @ 25°C			
RH Sensor		---		Capacitive 150pF @ 23°C and 30%RH	
Sensor Location	Temperature	Internally mounted Additional temperature probe available as an option	Mounted under the front cover Additional temperature probe available as an option	Mounted under the front cover Additional temperature probe: optional for HD226-1 model, not available for HD206-1 model	Internal temperature sensor on HD226-2 model Temperature and relative humidity combined probe with cable
	Relative Humidity	---	---	Mounted under the front cover	
Measuring and Operating Range	Temperature	-30...+80°C instrument -40...+105°C probe with cable	-30...+80°C instrument -40...+105°C probe with cable	-30...+80°C instrument -40...+105°C probe with cable	-30...+80°C instrument -40...+105°C probe with cable
	Relative Humidity	---	---	5%...98%RH	5%...98%RH
Accuracy	Temperature	±0.3°C in the 0...70°C range ±0.4°C outside the above range			
	Relative Humidity	---	---	±2.5%RH	±2.5%RH
Resolution	Temperature	0.1°C	0.1°C	0.1°C	0.1°C
	Relative Humidity	---	---	0.1%RH	0.1%RH
IP Protection		67	54 instrument 67 probe with cable	54 instrument 67 probe with cable	67 instrument 54 combined probe with cable
Number of channels		1 + 1 external probe (optional)	1 + 1 external probe (optional)	2 (HD206-1) 2+1 (HD226-1)	2 (HD206-2) 2+1 (HD226-2)
Storage Capacity		240.000 measurements with one active channel 120.000 measurements per channel with two active channels 80.000 measurements per channel with three active channels			
Reading Interval		Selectable among 1, 5, 10, 15, 30sec, 1, 5, 10, 15, 30min, 1hour			
PC interface		Through a passive optoisolated RS232 serial port, 9600 bauds			
Software		DeltaLog2 – Compatible with Windows 95, 98, NT, 2000, ME and Xp.			
Display (where provided)		3½ digit LCD, low battery symbol, 4 indicators of functional modes			
LED (where provided)		LED for operating status indication (HD226... and HD227... models)			
Power Supply		3.6V – 1Ah Replaceable lithium battery			
Battery: typical life		3 years (with a measurement every 10sec)			
Dimensions / Weight		52x88x36mm / 240gr			
Housing		Polycarbonate / rubber			
Instrument Connector		8-pole female minidin			
Probe Connector		8-pole male minidin			



Data display in tabular form.



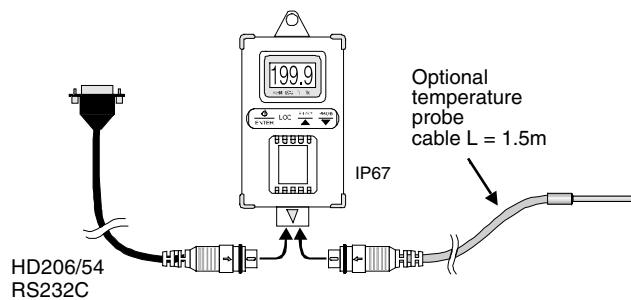
Data display in graphic form.



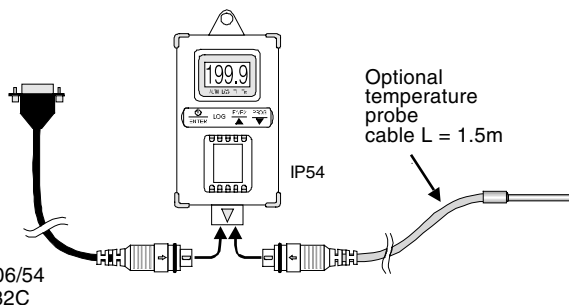
- A) Measurement registered by the two input channels of the instrument.
- B) Diagram of the two channels. The vertical yellow lines represent the storage interval activated through the "Store Data On File" command.
- C) Alarm current status. The red LED turns on when the setpoint is exceeded. Press the Reset key to clear it.
- D) Alarm history: it registers all the alarms occurred since the "READ CHANNELS" window was opened.

Models with LCD Display

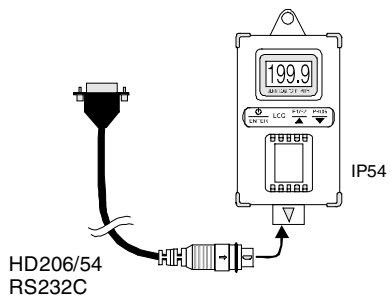
HD207 Internal temperature sensor



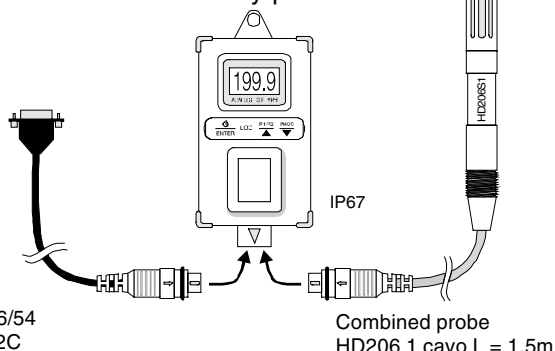
HD207-1 External temperature probe



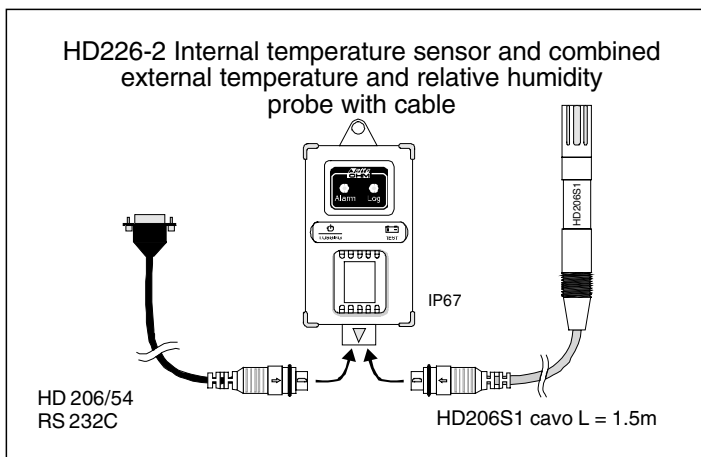
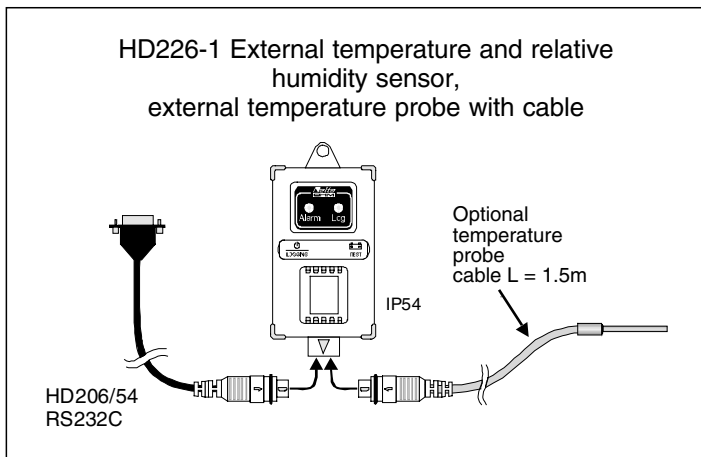
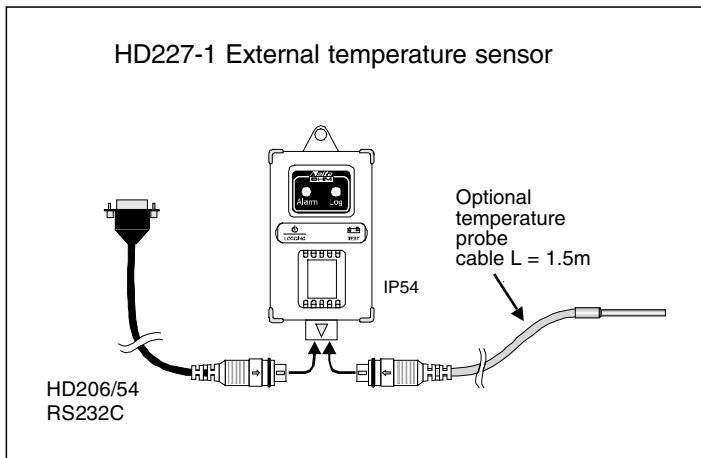
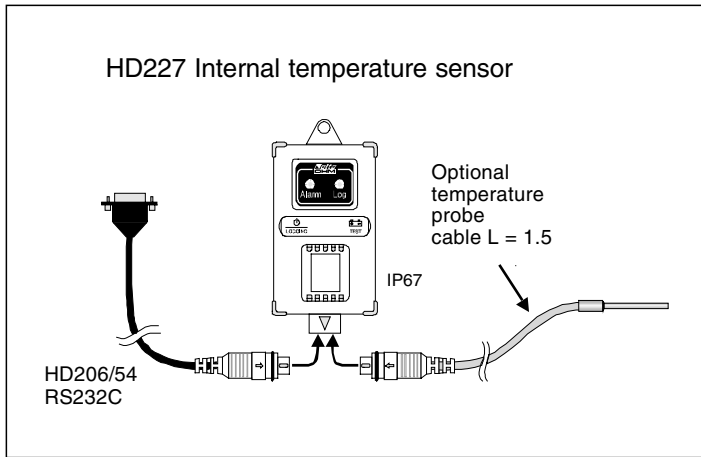
HD206-1 External temperature and relative humidity sensor



HD206-2 Temperature and relative humidity probe



Models without LCD Display



Ordering Code Minidatalogger

HD 2 0 6 - 2

- No Indication = Internal Sensor
- 1 = External Sensor/s
- 2 = Model with cable L = 1.5m
- 6 = Relative Humidity and Temperature Measurement
- 7 = Temperature Measurement
- 0 = LCD Display Version
- 2 = LED Version

Ordering Codes of Minidatalogger Probes and Accessories

TP207: immersion temperature probe with NTC sensor for measurements in liquids, powders and gas; total length: 45mm, diameter: 3mm, cable L = 1.5m, material: stainless steel.

TP207P: pointed/immersion temperature probe with NTC sensor for food industry applications; sheath length: 125mm, diameter: 4mm, cable L = 1.5m; material: stainless steel.

TP207A: temperature probe with NTC sensor for a fast measurement of the air temperature; sheath length: 125mm, diameter: 3mm, cable: L = 1.5m; material: stainless steel.

HD206S1: relative humidity/temperature combined probe, length: 109mm, diameter: 14mm; cable: L = 1.5m.

HD206/54: RS232C serial connection cable; cable: L=1.5m; 9-pole standard connector/ 8 pole minidin

HD75: Calibration saturated solution at 75%RH

HD33: Calibration saturated solution at 33%RH

DeltaLog2: Software to download and show data on PC for HD 206/226 – HD 207/227 series minidatalogger. Supplied with HD206/54 serial cable to connect the minidatalogger to a PC. Minidin 8-pole male connector and Sub D 9-pole female connector. Cable L = 1,5 m.

BL.1: Li-SoCl2 3.6V 1Ah battery

Specifications of the minidatalogger optional probe

CODE	IMMERSION PROBE (NTC)	TERMINATION
TP207	Probe for measurements in liquids, powders and gas 	

CODE	POINTED PROBE (NTC)	TERMINATION
TP207P	Pointed/Immersion stainless steel probe for food industry applications 	

CODE	AMBIENT TEMPERATURE (AIR) PROBE (NTC)	TERMINATION
TP207A	Probe for ambient temperature (air) fast measuring 	

CODE	TEMPERATURE AND RELATIVE HUMIDITY COMBINED PROBE
HD206/S1	

CODE	PC - MINI DATALOGGER ↔ RS232C CONNECTION CABLE
HD206/54	